

Name: _____ Date: _____

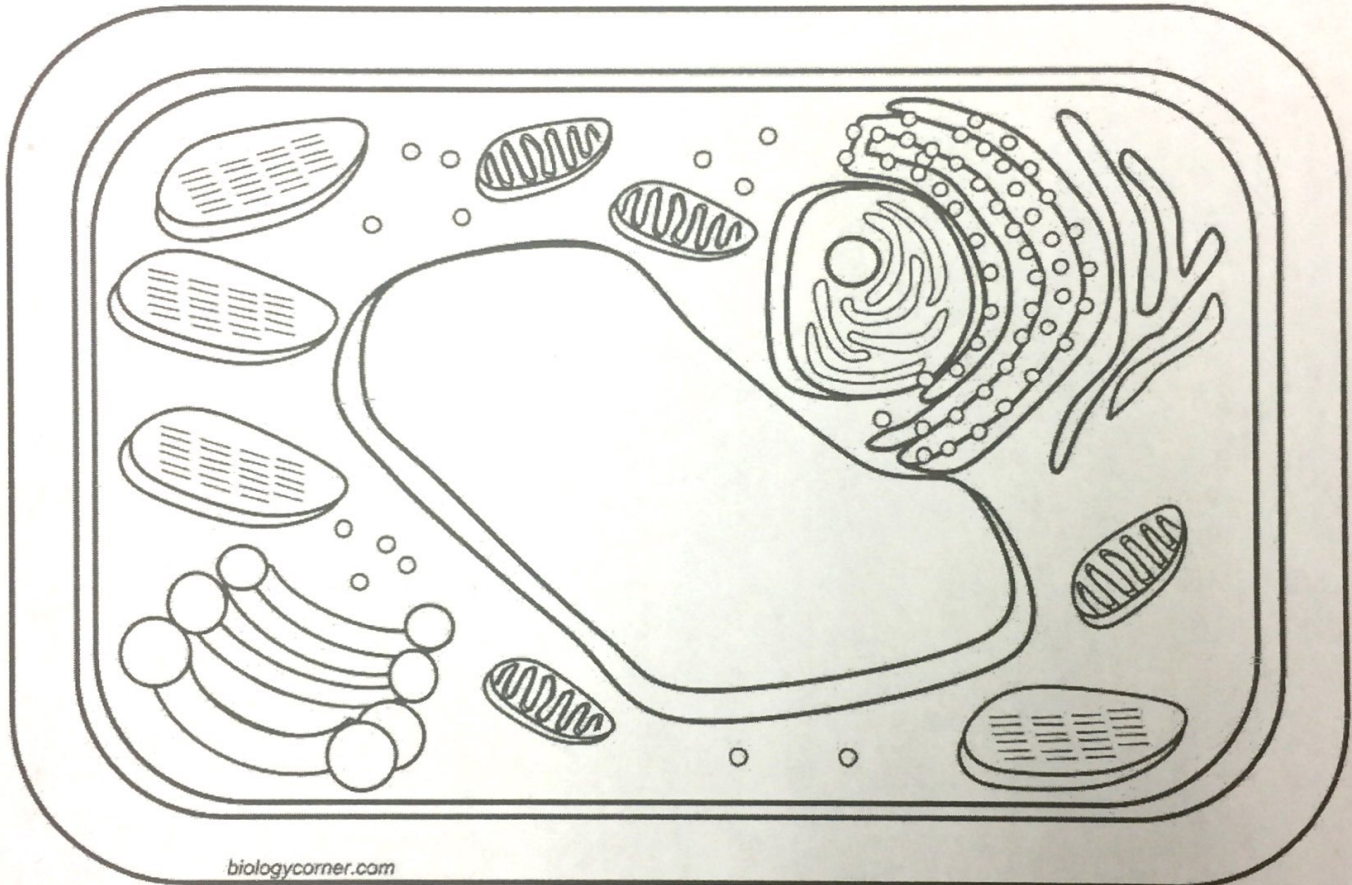
Plant Cell Coloring

- Cell Membrane (orange)
- Nucleoplasm (yellow)
- Mitochondria (red)
- Vacuole (light blue)
- Chromosomes (gray)

- Cell Wall (dark green)
- Nucleolus (brown)
- Chloroplasts (light green)

- Smooth Endoplasmic Reticulum (pink)
- Rough Endoplasmic Reticulum (pink)

- Ribosome (purple)
- Cytoplasm (white)
- Golgi Apparatus (dk blue)



biologycorner.com

1. Name two things found in a plant cell that are not found in an animal cell:

2. How does the shape of a plant cell differ from that of an animal cell?

3. What is the function of the chloroplasts?

4. What is the function of the vacuole?