

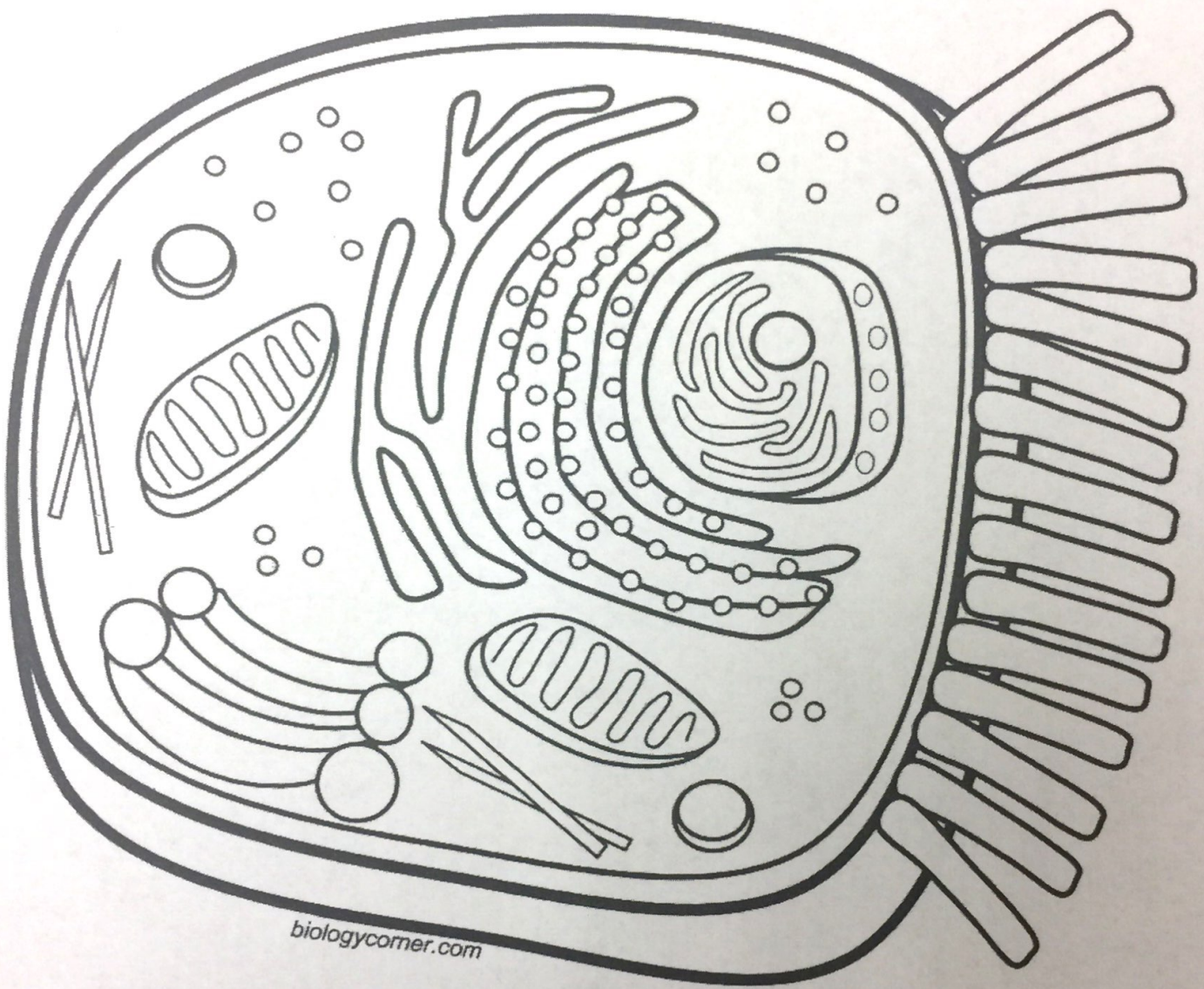
Name: \_\_\_\_\_

# Animal Cell Coloring

- Cell Membrane (light brown)
- Cytoplasm (white)
- Nucleoplasm (pink)
- Nuclear Membrane (dark brown)
- Ribosome (red)

- Nucleolus (black)
- Golgi Apparatus (pink)
- Cilia (yellow)
- Rough Endoplasmic Reticulum (dark blue)
- Smooth Endoplasmic Reticulum (light blue)

- Mitochondria (orange)
- Lysosome (purple)
- Microtubules (green)
- Chromosomes (dark green)



biologycorner.com

Briefly describe the function of the cell parts.

1. Cell membrane \_\_\_\_\_
2. Endoplasmic Reticulum \_\_\_\_\_
3. Ribosome \_\_\_\_\_
4. Golgi Apparatus \_\_\_\_\_
5. Lysosome \_\_\_\_\_
6. Microtubule \_\_\_\_\_
7. Mitochondria \_\_\_\_\_
8. Nucleus \_\_\_\_\_